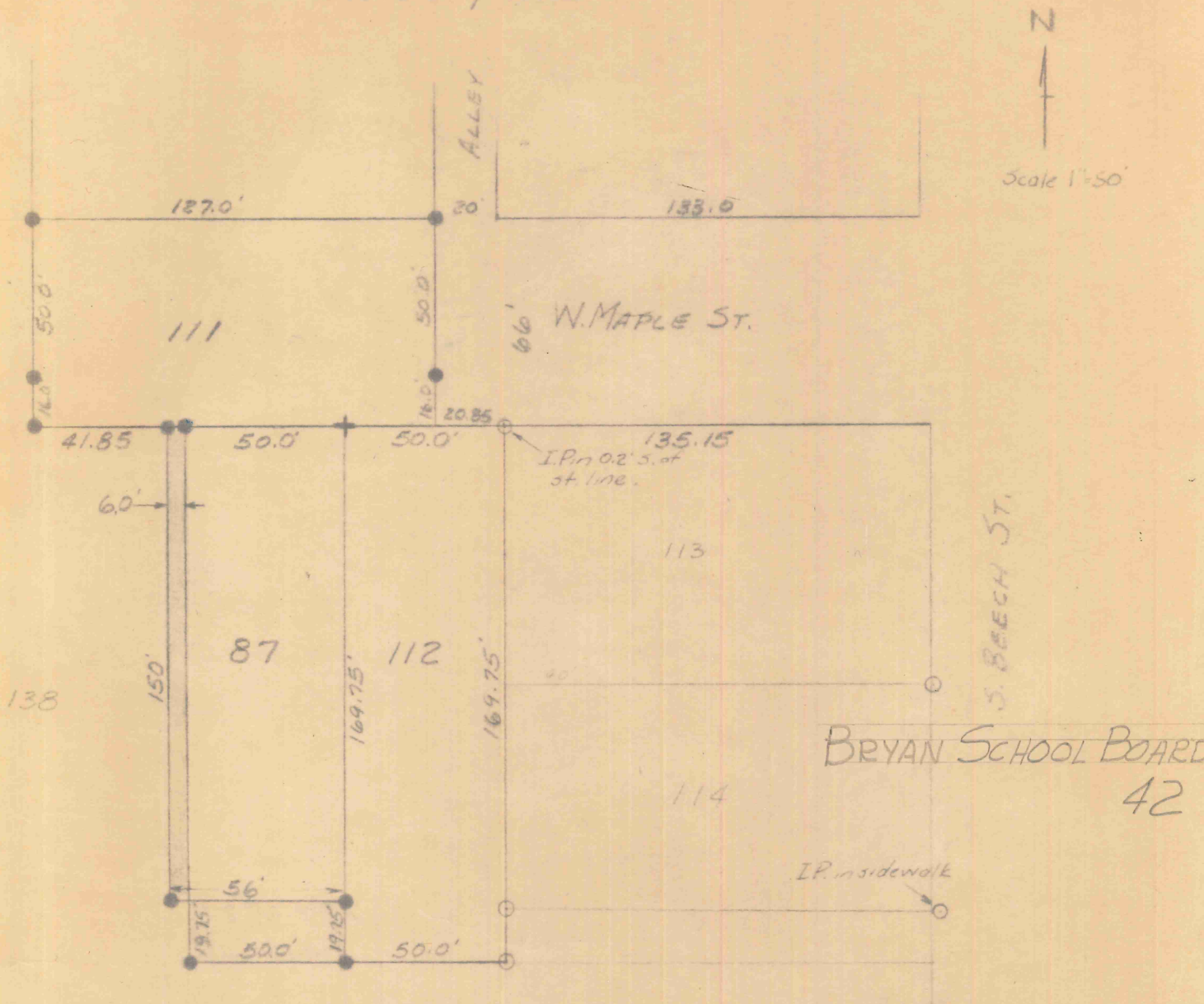


PLAT OF SURVEY  
 OF OUTLOTS 87, 111 (E. PART), & 112 IN  
 SECTION 17, T6N, R3E  
 BRYAN, OHIO



- - I. Pin found
- - I. Pin Set
- + - Chiselled in walk.

Note - Maple Street determined by producing a line formed by pins at lots 72, 116, 138 orig. town. Additional pins set March 10, 1956 to show transfer of property OL 138 & OL 87.

I hereby certify that this plat and notes represent a survey made by me and are correct to the best of my knowledge and belief.

Leonard Opdycke